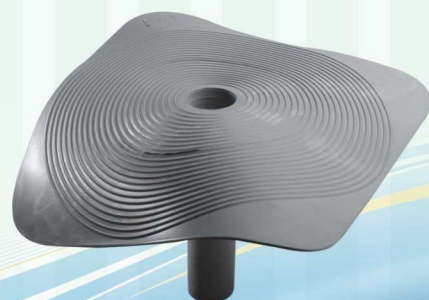


insulation strainers





Common values for both Turkey and Europe, good reputation and efficiency, based on quality of services provided to every and each customer, excellent post-sale technical support – reasons that make us a desirable partner for your projects.

SG TEKNOLOJİ SANAYİ TİCARET A.Ş. GROUP is based on 100% turkish capital and acts under a command of experienced turkish Project Team, called up to design and produce various range of water drain strainers, HDPE Pipe Fittings and other customized solutions for you possible necessities.

Being a member of SG TEKNOLOJİ GROUP, Maxdrain brand provides solutions for drain systems. Experienced sales staff provides high-quality sale and post-sale services during the life-time of our products.

We are proud to share our experience, technology and energy with our customers to provide mutually beneficial relationship.

Sincerely yours...

Professional solutions for your construction...



BITUMEN MEMBRANE STRAINERS WITH SIDE AND BOTTOM OUTLETS

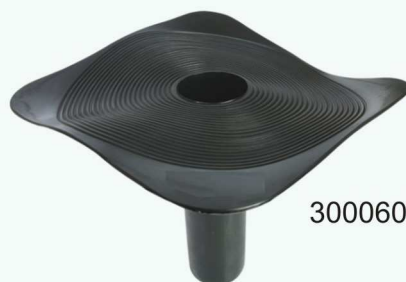
One of the most important details for a successful insulation is to use concordant drain systems along with the membranes applied. Our roof and terrace drains with vertical and horizontal outlets, branded MAXDRAIN, are manufactured from a special raw-material called I20 and due to their upper drain systems they provide absolute tightness.

Problems with water resistance generally emerge on lowest part of roof or terrace. Due to slope, collected water goes towards this part. At this point, the building material that will provide tightness between evacuation pipes and coating, are our drain systems branded MAXDRAIN.

The model in appropriate diameter is placed on the tip of the evacuation pipe. Thanks to its chamfered structure, just a black plate seen on upper part shall remain. During the placement of insulation coating, heating process is just applied to the membrane coating. At this point, it is an important detail to apply the bitumen parts, liquefied by melting a piece of membrane, onto outlet parts for our system to work seamlessly.



300050BMA



300060BMA



300070BMA



300100BMA



300125BMA

Code of Product	Size (Diameter)	Description
300050BMA	Ø50	Bitumen membrane strainers with side outlet
300060BMA	Ø60	Bitumen membrane strainers with side outlet
300070BMA	Ø70	Bitumen membrane strainers with side outlet
300100BMA	Ø100	Bitumen membrane strainers with side outlet
300125BMA	Ø125	Bitumen membrane strainers with side outlet
300150BMA	Ø150	Bitumen membrane strainers with side outlet
3070100BMA	70*100 mm	Bitumen membrane strainers with side outlet



3070100BMA

BITUMEN MEMBRANE HORIZONTAL OUTLET STRAINERS LEAF HOLDERS



301100BMY

Code of Product	Size (Diameter)	Description
301050BMY	Ø50	Bitumen membrane horizontal outlet strainers
301070BMY	Ø70	Bitumen membrane horizontal outlet strainers
301100BMY	Ø100	Bitumen membrane horizontal outlet strainers

LEAF HOLDERS

These holders are used on drain pipes of roofs, roof terraces without ceramic or floor tile and ventilation shafts, the connection is framed on the last balcony corner in corner balcony systems to prevent the entrance of leaves or any other litters into them. These holders are resistant to UV-rays, climatic conditions and chemical materials.

ANTENNA OUTPUT APPARATUS

Used on terrace roofs to prevent antenna cables to affect insulation.

Code of Product	Description
302100YT	70 mm - 150 mm (leaf holders)
302050YT	50 mm - 100 mm (leaf holders)
303100AA	Bitumen membrane antenna output apparatus



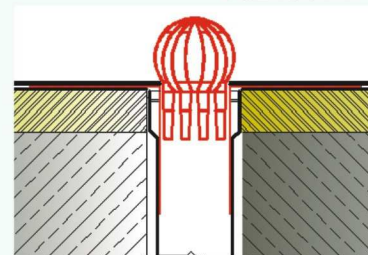
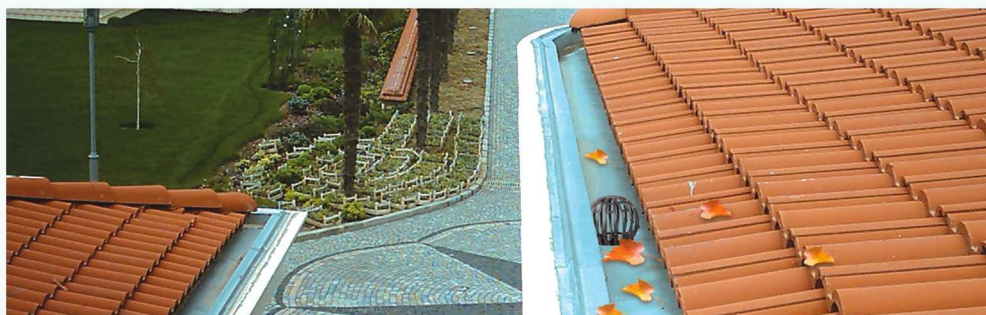
303100AA



302050YT



302100YT



Membrane filters with steep descent and leaf holder for protection

- * LDPE (I20) based material, bitumen membranes for different weather conditions
- * PVC-based material, PVC membranes with for different weather conditions
- * Concordant with R50-60-70-100-125-150 diameters and do not let rebounding
- * In 31x31 size and 25cm length strainers branded MAXDRAIN

TWIN SERIES EXPENSES - INSULATION FILTER SYSTEMS

MD5017



MD5018



MD5019



TWIN SERIES EXPENSES



PARAPET FILTER SYSTEMS

All our products are resistant to direct sunlight and UV rays, chemical substances and physical abrasion. Our strainers with parapet outlets provide a practical solution to the need of passing over the parapet barrier with a vertical extension and to the horizontal connections by using them with leaf holders on movable or unmovable roofs.

Problems with water resistance generally emerge on lowest part of roof or terrace. Due to slope, collected water goes towards this part. At this point, the building material that will provide tightness between evacuation pipes and coating, are our drain systems branded MAXDRAIN.

The model of appropriate diameter is placed on the tip of the evacuation pipe. Thanks to its chamfered structure, just a black plate seen on upper part shall remain. During the placement of insulation coating, heating process is just applied to the membrane coating. At this point, it is an important detail to apply the bitumen parts, liquefied by melting a piece of membrane, onto outlet parts for our system work seamlessly.

Pipe Adaptor

Pipe adaptor part with it's multi directional connection feature, provides practical solutions for vertical and horizontal extension requirements. This part has been opened by help of a knife in the direction of connection before mounting.

Code of Product	Size (Diameter)	Description
304050PS	50 mm	Parapet filter systems
304070PS	70 mm	Parapet filter systems
304100PS	100 mm	Parapet filter systems
30400100PS	100 x 100 mm	Parapet filter systems
30400100BA		Pipe Adaptor

30400100BA



30400100PS



304100PS



304070PS



304050PS

MEMBRANE PVC STRAINERS

One of the most important details for a successful insulation is to use concordant drain systems along with the membranes applied. Our roof and terrace drains with vertical and horizontal outlets, branded MAXDRAIN, are manufactured from a special raw-material called I20 and due to their upper drain systems they provide absolute tightness.

Problems with water resistance generally emerge on lowest part of roof or terrace. Due to slope, collected water goes towards this part. At this point, the building material that will provide tightness between evacuation pipes and coating, are our drain systems branded MAXDRAIN.

The model in appropriate diameter is placed on the tip of the evacuation pipe. Thanks to its chamfered structure, just a black plate seen on upper part shall remain. During the placement of insulation coating, heating process is just applied to the membrane coating. At this point, it is an important detail to apply the bitumen parts, liquefied by melting a piece of membrane, onto outlet parts for our system work seamlessly.

306100PPS



305125PMS



305050PMS



307000PHB



308000PIKA



309000PAA



308000PDKA



Code of Product	Size (Diameter)	Description
305050PMS	Ø50	PVC membrane filters with steep downhill
305060PMS	Ø60	PVC membrane filters with steep downhill
305070PMS	Ø70	PVC membrane filters with steep downhill
305100PMS	Ø100	PVC membrane filters with steep downhill
305125PMS	Ø125	PVC membrane filters with steep downhill
305150PMS	Ø150	PVC membrane filters with steep downhill
306100PPS	Ø100	Parapet with PVC membrane filter
306070PPS	Ø70	Parapet with PVC membrane filter
306050PPS	Ø50	Parapet with PVC membrane filter
307000PHB		PVC membrane with downcast
308000PIKA		PVC membrane with the inner corner bracket
308000PDKA		PVC membrane with the outer corner bracket
309000PAA		PVC membrane antenna output apparatus

MEMBRANE AND SHINGLE AIR CONDITIONING UNITS

Membrane downcast

Membrane downcast withdraws moisture and vapor out of the building through the ventilation shafts keeping insulating layer dry and undistorted. We advice to use this unit, made of PVC or I20, on 25 square meter areas. Membrane ventilation pipes enable air circulation in between the membrane mounted on them by stretching and ferroconcrete or panel carcass lying down. Besides, due to their specifically designed caps, they prevent the entrance of foreign matters beneath the membrane.



312000SHBS

Shingle downcast

Building a ventilation system on the roof is one of the important details of roof planing. If your roof insulation covering is shingle or slate membrane, shingle ventilation unit is used. By means of ventilation, the heat in summer and the moisture in winter are evacuated. Thanks to our ventilation unit, energy loss diminished, roof's life is prolonged and air circulation needed for roof insulation coating is provided. Two different systems are put into your service for your roof. Product is represented in three different colors in harmony with your shingle coating for both models.



312000SHBY

Low-height custom design, excellent UV performance.
Grid system that prevents insects and birds from coming in.
Specially designed angle for preventing water to reach in.
Specially designed rain-proof basket-net.



310000MHB



Code of Product	Width	Size	Height
310000SHBS	300 mm	505 mm	60 mm
310000SHBK			
310000SHBY			
311000SHBS	340 mm	440 mm	115 mm
311000SHBK			
311000SHBY			

Code of Product Description

310000MHB Membrane downcast

Code of Product Description

311000SHBS Shingle downcast flat model - Black

311000SHBK Shingle downcast flat model - Red

311000SHBY Shingle downcast flat model - Green

Code of Product Description

312000SHBS Shingle downcast cap model - Black

312000SHBK Shingle downcast cap model - Red

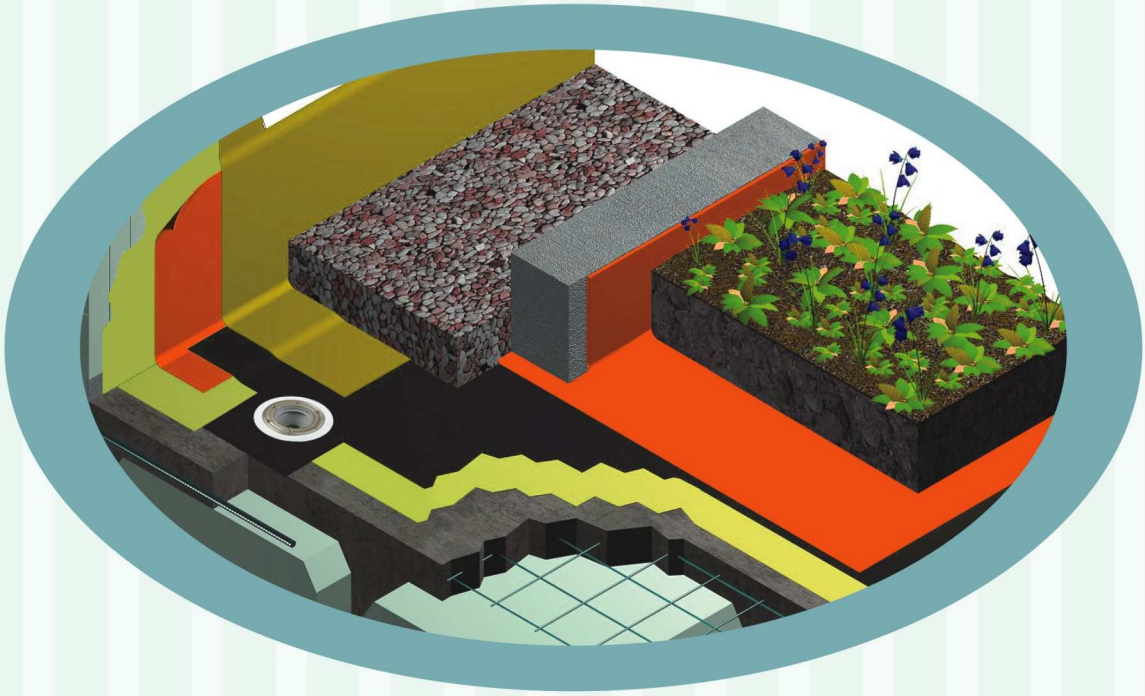
312000SHBY Shingle downcast cap model - Green



311000SHBK



311000SHBS



SG TECHNOLOGY
Industry & Trade Corporation

Authorized Dealer

Phone : +90 (282) 650 00 51 (Pbx) Fax : +90 (282) 650 01 94 E-Mail : info@maxdrain.com
Address : Muhittin Mah.Çetin Emeç Bulvarı No : 42/1 Çorlu / TEKİRDAĞ - TURKEY

www.maxdrain.com